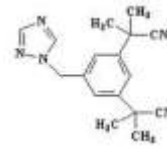


Rx ANASTROZOLE
(It is used to treat breast cancer in postmenopausal women.)



Anastrozole

Generic Name: anastrozole (Pronunciation: anAS troe zole)

What is anastrozole (Arimidex)?

Anastrozole lowers estrogen levels in postmenopausal women, which may slow the growth of certain types of breast tumors that need estrogen to grow in the body.

Anastrozole is used to treat breast cancer in postmenopausal women. It is often given to women whose cancer has progressed even after taking tamoxifen (Nolvadex, Soltamox).

Anastrozole may also be used for other purposes not listed in this medication guide.

What are the possible side effects of anastrozole (Arimidex)?

Get emergency medical help if you have any of these signs of an allergic reaction: hives; difficulty breathing; swelling of your face, lips, tongue, or throat.

Call your doctor at once if you have any of these serious side effects:

- * sudden numbness or weakness, especially on one side of the body;
- * sudden headache, confusion, problems with vision, speech, or balance;
- * swollen glands;
- * a bone fracture; or
- * swelling in your hands or feet;

Less serious side effects may include:

- * hot flashes;
- * joint pain or stiffness;
- * weakness;
- * sore throat;
- * depression, mood changes;
- * nausea; or
- * back pain, bone pain.

This is not a complete list of side effects and others may occur. Call your doctor for medical advice about side effects. You may report side effects to FDA at 1-800-FDA-1088.

What is the most important information I should know about anastrozole (Arimidex)?

FDA pregnancy category D. This medication can cause harm to an unborn baby. Do not use anastrozole without telling your doctor if you are pregnant. It could harm the unborn baby. Use effective birth control, and tell your doctor if you become pregnant during treatment.

You may need to take a pregnancy test before using **anastrozole**, to make sure you are not pregnant.

You also should not use this medication if you are breast-feeding a baby, or if you are allergic to anastrozole.

Before using **anastrozole**, tell your doctor if you have heart disease, circulation problems, a history of stroke or blood clot, severe liver disease, or if you have not yet completed menopause.

You may need to keep taking **anastrozole** for up to 5 years. Follow your doctor's instructions.

Anastrozole may not work as well if you take it together with tamoxifen or an estrogen medication. Before you start taking anastrozole, tell your doctor if you also take tamoxifen or estrogen.

What should I discuss with my healthcare provider before taking anastrozole (Arimidex)?

You should not use this medication if you are allergic to **anastrozole**, or if you are pregnant or breast-feeding.

If you have any of these other conditions, you may need a dose adjustment or **special tests to safely use this medication:**

- * heart disease;
- * circulation problems;
- * a history of stroke or blood clot;
- * severe liver disease; or
- * if you have not yet completed menopause.

FDA pregnancy category D. This medication can cause harm to an unborn baby. Do not use **anastrozole** without telling your doctor if you are pregnant. It could harm the unborn baby. Use effective birth control, and tell your doctor if you become pregnant during treatment.

You may need to take a pregnancy test before using **anastrozole**, to make sure you are not pregnant.

It is not known whether **anastrozole** passes into breast milk or if it could harm a nursing baby. Do not use this medication without telling your doctor if you are breast-feeding a baby.

How should I take anastrozole (Arimidex)?

Take this medication exactly as prescribed by your doctor. Do not take it in larger amounts or for longer than recommended. Follow the directions on your prescription label.

Anastrozole is usually taken once per day. You may need to keep taking this medication for up to 5 years. Follow your doctor's instructions.

Store anastrozole at room temperature away from moisture and heat.

What happens if I miss a dose (Arimidex)?

Take the missed dose as soon as you remember. If it is almost time for your next dose, wait until then to take the medicine and skip the missed dose. Do not take extra medicine to make up the missed dose.

What happens if I overdose (Arimidex)?

Seek emergency medical attention if you think you have used too much of this medicine.

The symptoms of an **anastrozole** overdose are not known.

What should I avoid while taking anastrozole (Arimidex)?

Anastrozole can cause side effects that may impair your thinking or reactions. Be careful if you drive or do anything that requires you to be awake and alert.

What other drugs will affect anastrozole (Arimidex)?

Anastrozole may not work as well if you take it together with tamoxifen or an estrogen medication. Before you start taking anastrozole, tell your doctor if you



Taj Group of Companies INDIA

Taj Pharmaceuticals Ltd.

Phone : General EPA BX : 91 - (0)22 - 26374592/92 91,
(0)22 - 26374592/93 91 - (0)22 - 30601000,
Fax : 91-(0)22-26341274

Revised November 2010