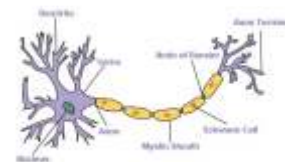
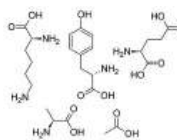


# Rx GLATIRAMER

(GLATIRAMER - INJECTION (glah-TEE-ruh-mer))



**GENERIC NAME:** GLATIRAMER - INJECTION (glah-TEE-ruh-mer)

## USES

This medication is used to treat a type of multiple sclerosis that occurs when symptoms appear in cycles of worsening and improvement (relapsing/remitting multiple sclerosis-MS). It is a protein that is thought to work by preventing your immune system from attacking the nerves in your brain and spinal cord. This effect can decrease the number of periods of disease worsening (relapses) and prevent or delay disability. This drug is known as an immunomodulator. It is not a cure for MS.

## HOW TO USE

This medicine comes with a Patient Information Leaflet. Read it carefully. Ask your doctor, nurse, or pharmacist any questions that you may have about this medicine. This drug is administered by injection under the skin. Learn all preparation and usage instructions in the product package. Your health care professional will teach you how to use this medication. If any of the information is unclear, consult your doctor or pharmacist. Your doctor will usually have you give your first injection in the office. Wash and dry your hands before injecting glatiramer. Before using, warm the drug if it has been refrigerated by keeping the syringe at room temperature for 20 minutes. Do not inject cold glatiramer because this can be painful. Before using, check this product visually for particles or discoloration. If either is present, do not use the liquid. Glatiramer is usually given at a dose of 20 milligrams once daily at the same time each day or as directed by your doctor. Before injecting each dose, clean the injection site with rubbing alcohol. It is important to change the injection site daily to prevent problem areas under the skin. Keep track of your injections and do not reuse the same injection site for at least 1 week. Inject the medication under the skin of the hip, thigh, abdomen, buttock, or back of the upper arm. Do not inject into a vein. After pulling out the needle, apply gentle pressure on the injection site. Do not rub the area. Discard any unused portion in the syringe after a single use. Do not save for later use. Dosage is based on your condition and response to therapy. Use this medication regularly in order to get the most benefit from it. To help you remember, use it at the same time each day. Do not change your dose or stop using this medication without talking with your doctor. Learn how to discard needles and medical supplies safely. Consult your pharmacist. Inform your doctor if your condition worsens.

## SIDE EFFECTS

Injection site reactions (e.g., pain, redness, soreness, and swelling) may occur. Nausea, chills, joint aches, neck pain, or headache may also occur. If any of these effects persist or worsen, notify your doctor or pharmacist promptly. Immediately after injection, you may experience flushing, chest pain, fast heartbeat, anxiety, shortness of breath, or itching. This injection reaction usually starts to occur after you have used the drug for a few months but can occur after any injection. These symptoms disappear fairly quickly and usually do not require treatment. If these symptoms do not go away in a few minutes, seek immediate medical attention. Tell your doctor immediately about this reaction before your next injection. Ask your doctor if you should continue using this medication. Remember that your doctor has prescribed this medication because he or she has judged that the benefit to you is greater than the risk of side effects. Many people using this medication do not have serious side effects. Tell your doctor immediately if any of these unlikely but serious side effects occur: dizziness/fainting, infection (e.g., fever, persistent sore throat), mental/mood changes (e.g., depression), severe pain at the injection site, shakiness (tremor), swelling of the legs/feet (water retention), vision problems. A very serious allergic reaction to this drug is unlikely, but seek immediate medical attention if it occurs. Symptoms of an allergic reaction include: rash, itching/swelling (especially of the face/tongue/throat), severe dizziness, trouble breathing. This is not a complete list of possible side effects. If you notice other effects not listed above, contact your doctor or pharmacist. In the US - Call your doctor for medical advice about side effects. You may report side effects to FDA at 1-800-FDA-1088. In Canada - Call your doctor for medical advice about side effects. You may report side effects to Health Canada at 1-866-234-2345.

## PRECAUTIONS

Before using glatiramer, tell your doctor or pharmacist if you are allergic to it; or to mannitol; or if you have any other allergies. Before using this medication,

tell your doctor or pharmacist your medical history, especially of: heart disease (e.g., chest pain, heart attack). During pregnancy, this medication should be used only when clearly needed. Discuss the risks and benefits with your doctor. It is not known if this drug passes into breast milk. Consult your doctor before breast-feeding.

## DRUG INTERACTIONS

Your doctor or pharmacist may already be aware of any possible drug interactions and may be monitoring you for them. Do not start, stop, or change the dosage of any medicine before checking with them first. Before using this medication, tell your doctor or pharmacist of all prescription and nonprescription/herbal products you may use. Keep a list of all your medications with you, and share the list with your doctor and pharmacist.

## OVERDOSE

If overdose is suspected, contact your local poison control center or emergency room immediately. US residents can call the US National Poison Hotline at 1-800-222-1222. Canada residents can call a provincial poison control center.

## MISSED DOSE

If you miss a dose, use it as soon as you remember. If it is near the time of the next dose, skip the missed dose and resume your usual dosing schedule. Do not double the dose to catch up.

## STORAGE

Refrigerate the syringes in their carton between 36-46 degrees F (2-8 degrees C). Do not freeze. Do not use syringes that have been frozen. If refrigeration is not possible, the drug may be stored at room temperature at 59-86 degrees F (15-30 degrees C) for up to 1 week. Do not expose medication to strong light or high temperatures. Keep all medications away from children and pets. Do not flush medications down the toilet or pour them into a drain unless instructed to do so. Properly discard this product when it is expired or no longer needed. Consult your pharmacist or local waste disposal company for more details about how to safely discard your product.

**Note :** This product information is intended only for residents of the India. Taj Pharmaceuticals Limited, medicines help to treat and prevent a range of conditions—from the most common to the most challenging—for people around the world.

**Taj DRUG**  
WORLD

Taj Group of Companies <sup>INDIA</sup>

Taj Pharmaceuticals Ltd.

Phone : General EPA BX : 91 - (0)22 - 26374592/92 91,  
(0)22 - 26374592/93 91 - (0)22 - 30601000,  
Fax : 91-(0)22-26341274

Revised November 2010