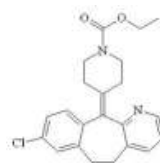


# Rx LORATADINE

(It is a long-acting antihistamine that is used for the treatment of allergy)



**GENERIC NAME:** loratadine

## DRUG CLASS AND MECHANISM

Loratadine is a long-acting antihistamine that is used for the treatment of allergy. Histamine is a chemical that causes many signs and symptoms of allergy. Histamine is released from histamine-storing cells (mast cells) and attaches to other cells that have receptors for histamine on their surfaces. Histamine stimulates the cells to release chemicals that produce effects that we associate with allergy. Loratadine blocks one type of histamine receptor (the H1 receptor) and thus prevents activation of cells with H1 receptors by histamine. Unlike some antihistamines, loratadine does not enter the brain from the blood and, therefore, does not cause drowsiness when taken at recommended doses. The FDA approved loratadine in April 1993.

**GENERIC AVAILABLE:** Yes

**PREPARATIONS:** Tablets: 10 mg. Tablets, disintegrating: 5 and 10 mg. Tablets, chewable: 10 mg. Syrup: 5 mg/5 ml.

## PRESCRIBED FOR

Loratadine is used for the relief of nasal and non-nasal symptoms of seasonal allergic rhinitis. It is also used to treat patients with chronic urticaria, a type of allergic skin rash.

## DOSING

The usual dose of loratadine is 10 mg daily for adults and children older than six years of age.

## USES

This medication is an antihistamine that treats symptoms such as itching, runny nose, watery eyes, and sneezing from "hay fever" and other allergies. It is also used to relieve itching from hives. Loratadine does not prevent hives or prevent/treat a serious allergic reaction (e.g., anaphylaxis). Therefore, if your doctor has prescribed epinephrine to treat allergic reactions, always carry your epinephrine injector with you. Do not use loratadine in place of your epinephrine. If you are self-treating with this medication, it is important to read the manufacturer's package instructions carefully so you know when to consult your doctor or pharmacist. (See also Precautions section.) Do not use this medication in children younger than 2 years unless directed by the doctor.

## HOW TO USE

If you are using the over-the-counter product to self-treat, read all the directions on the product package before taking this medication. If your doctor has prescribed this medication, follow your doctor's directions and the instructions on your prescription label. If you have any questions, consult your doctor or pharmacist. Take this medication by mouth with or without food, usually once a day or as directed by your doctor or the product package. If you are using the chewable tablets, chew each tablet well and swallow. Dosage is based on your age, condition, and response to treatment. Do not increase your dose or take this drug more often than directed. Do not take more of this medication than recommended for your age. Tell your doctor if your allergy symptoms do not improve after 3 days of treatment or if your hives last more than 6 weeks. Seek immediate medical attention if your condition worsens or you think you have a serious medical problem (e.g., very serious allergic reaction/anaphylaxis).

## SIDE EFFECTS

This drug usually has no side effects. If you have any unusual effects, contact your doctor or pharmacist promptly. A very serious allergic reaction to this drug is rare. However, seek immediate medical attention if you notice any symptoms of a serious allergic reaction, including: rash, itching/swelling (especially of the face/tongue/throat), severe dizziness, trouble breathing. This is not a complete list of possible side effects. If you notice other effects not listed above, contact your doctor or pharmacist. In the US - Call your doctor for medical advice about side effects. You may report side effects to FDA at 1-800-FDA-1088. In Canada - Call your doctor for medical advice about side effects. You may report side effects to Health Canada at 1-866-234-2345.

## PRECAUTIONS

Before taking loratadine, tell your doctor or pharmacist if you are allergic to it; or if you have any other allergies. Before using this medication, tell your doctor or pharmacist your medical history. Do not self-treat with this medication without consulting your doctor first if you have certain medical conditions such as: kidney disease, liver disease. Loratadine does not usually cause drowsiness when used at recommended doses. However, do

not drive, use machinery, or do any activity that requires alertness until you are sure you can perform such activities safely. If you have hives and your doctor has prescribed loratadine, or if you are considering using this drug to treat your own hives, tell your doctor immediately if you have any of these other symptoms because they may be signs of a more serious condition: hives that are an unusual color, hives that look bruised or blistered, hives that do not itch. The chewable tablets may contain aspartame. If you have phenylketonuria (PKU) or any other condition that requires you to restrict your intake of aspartame (or phenylalanine), consult your doctor or pharmacist about using this drug safely. Caution is advised when using this drug in the elderly because they may be more sensitive to its effects, especially drowsiness. During pregnancy, this medication should be used only when clearly needed and as directed by your doctor. Discuss the risks and benefits with your doctor before taking this drug. This medication passes into breast milk. However, it is unlikely to harm a nursing infant. Consult your doctor before breastfeeding.

## DRUG INTERACTIONS

If you are taking this medication under your doctor's direction, your doctor or pharmacist may already be aware of any possible drug interactions and may be monitoring you for them. Do not start, stop, or change the dosage of any medicine before checking with your doctor or pharmacist first. Check the labels on all your medicines (e.g., cough-and-cold products) because they may contain additional antihistamines that could increase your risk for side effects. Ask your pharmacist about using these products safely. If you are scheduled for allergy testing, ask your doctor if you should stop taking this medication for several days before testing. This drug may affect your allergy test results. This document does not contain all possible interactions. Therefore, before using this product, tell your doctor or pharmacist of all the products you use. Keep a list of all your medications with you, and share the list with your doctor and pharmacist.

## OVERDOSE

If overdose is suspected, contact your local poison control center or emergency room immediately. US residents can call the US National Poison Hotline at 1-800-222-1222. Canada residents can call a provincial poison control center. Symptoms of overdose may include: severe drowsiness.

## MISSED DOSE

If you miss a dose, take it as soon as you remember. If it is near the time of the next dose, skip the missed dose and resume your usual dosing schedule. Do not double the dose to catch up.

## STORAGE

Different brands/strengths of this medication may have different storage requirements. Read the package labeling or ask your pharmacist for the storage requirements for the product you are using. Protect from light. Do not store in the bathroom. Keep all medicines away from children and pets. Do not flush medications down the toilet or pour them into a drain unless instructed to do so. Properly discard this product when it is expired or no longer needed. Consult your pharmacist or local waste disposal company for more details about how to safely discard your product.

**Note :** This product information is intended only for residents of the India. Taj Pharmaceuticals Limited, medicines help to treat and prevent a range of conditions—from the most common to the most challenging—for people around the world.

**TAJ DRUG** WORLD 

**Taj Group of Companies** INDIA

**Taj Pharmaceuticals Ltd.**

Phone : General EPA BX : 91 - (0)22 - 26374592/92 91,  
(0)22 - 26374592/93 91 - (0)22 - 30601000,  
Fax : 91-(0)22-26341274

Revised November 2010